





Data given at the catalogue is only for general information purpose, Almesan Alüminyum keeps the rights of revision of technical and design details.

info@almesan.com.tr
www.almesan.com.tr

© Almesan Alüminyum Sanayi ve Ticaret A.Ş.
Head Office | Veysel Karani Mahallesi, Çolakoğlu Sokak,
No: 10, Rings Blok No: 10/128, 34885 Sancaktepe –
İstanbul / Türkiye
T: +90 (216) 564 82 00 | F: +90 (216) 564 82 99

Plant | Arslanbey Organize Sanayi Bölgesi, 1. Cadde,
No:10, 41285 Kartepe – Kocaeli / Türkiye
T: +90 (262) 351 39 43 | F: +90 (262) 351 39 46

ABOUT US

Almesan Alüminyum started its commercial activities in 1994, decided to make its first industrial investment in 2008 and to continue as industrial entity. It has completely purchased a Canadian facility producing for the important automotive manufacturers of North America, and moved the facility to the current location in Arslanbey Organized Industrial Zone, and started its production activities since 2009 with a successful commissioning process.

Almesan Alüminyum as an only twin band casting technology user of Türkiye, is besides the leader in the production of slugs and discs in the aluminum flat product sector, in 2018, it has completed its investment upto 1600 mm width continuous casting line including cut-to-length, press, cold rolling, annealing, washing-tensioning and slitting lines for new emerging markets.



Almesan Alüminyum's Production Facilities located in Kocaeli Arslanbey Organized Industrial Zone have 100.000 m² open and 50.000 m² closed area. Incorporating two different production technologies, Almesan Alüminyum has an annual production capacity of 50 thousand tons of casting and hot rolled coils.

Almesan Alüminyum; cold and hot rolled flat products together with disc production presses, slug production presses, cold-hot forging presses and machining benches, specific mold inventory that can produce different parts with wide ranges, slug annealing furnaces, quenching and aging furnaces, surface sandblasting, with process equipment that can perform vibration and roughening operations; It has an annual production capability and capacity of 30,000 tons of aluminum discs, slugs, strips, automotive rod parts. Almesan Alüminyum is able to manufacture its own production molds for parts orders of different sizes and geometries from its customers. 4xxx, 5xxx, 6xxx series alloys are produced only by Almesan Alüminyum in Türkiye with twin band casting technology.

Besides Almesan Alüminyum supplies aluminium semi-products to leading kitchenware producers fo the world, also supplies raw material, semi-product and cold- and hot forming parts to the main vendors of world's leading automotive brands and transformer and cable manufacturers as well.

ALMESAN ALÜMİNYUM AT A GLANCE



**Leading Disc
Manufacturer of
Europe and
Türkiye**



**Number One
Exporter at the
Category of
Products Made of
Aluminium**



**Only Manufacturer
of Europe At Twin
Belt Casting**



**60%
Export
Rate**



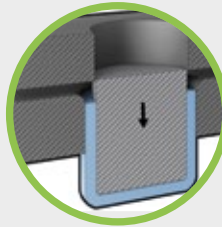
**Annual
30.000 Tons
Product
Capacity**



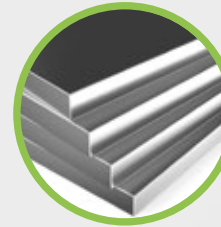
**4 Continents
31 Countries
Annual Average
200 Active
Customer Works**



**Production
Capability for
Custom Made
Solutions**



**Higher
Deep Drawability
Properties**



**Plate and Sheet
Production for 6xxx
series and other
specific alloys upto
50 mm**



**ECO2ALL Product Range
100% Recyclable and Lower Carbon Footprint**



Our Vision

To become a company that is on the track of continuous growth with the ability to combine traditional and global culture, by meeting the expectations of customers, employees and shareholders at the highest level and by making the highest contribution to all sectors, where aluminium is used.

Our Mission

To produce aluminum semi-finished and finished products in the optimum combination of quality, innovation and economy; to make production sustainable in terms of human, environment and energy resources by making productivity unseparable in all areas; to create a safer and more comfortable working environment for our employees; to contribute to a more livable and hopegiving world for future generations with a management approach that ensures the engagement of all stakeholders; to make the aluminium sector, as a member of it, more valuable by increasing its brand power with the performing activities.



COMMERCIAL ALLOYS

1xxx	1050, 1070, 1100
3xxx	3003, 3005, 3105
4xxx	4006, 4017
6xxx	6060, 6061, 6063, 6082
8xxx	8006, 8111

ECO2ALL



The production of different alloys is available based on customers' specific demands. Data given includes the alloys of Almesan Alüminyum's own commercial product range currently. Eco2All represents recycled products.

PRODUCTION PROCESSES



**Casting
Lines**



Twin Band Casting Technology Capacity Per Line

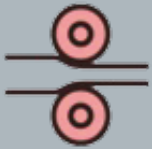
Melting Capacity	40 ton
Hold-On Capacity	30 ton
Casting Thickness	16 - 50 mm
Casting Speed	9 ton/hour



Twin Roll Casting Technology Capacity Per Line

Melting Capacity	30 ton
Hold-On Capacity	15 ton
Casting Thickness	5 - 12 mm
Casting Speed	2,5 ton/hour

PRODUCTION PROCESSES



**Hot
Rolling**

Hot-Rolling I

Compression Ratio	%55
Maximum Width	650 mm
Thickness	16 - 45 mm

Hot-Rolling II

Compression Ratio	%45
Maximum Width	650 mm
Thickness	7 - 12 mm



PRODUCTION PROCESSES



**Cold
Rolling**



Cold-Rolling I

Compression Ratio	%45
Maximum Width	700 mm
Thickness	0,30 - 12 mm

Cold-Rolling II

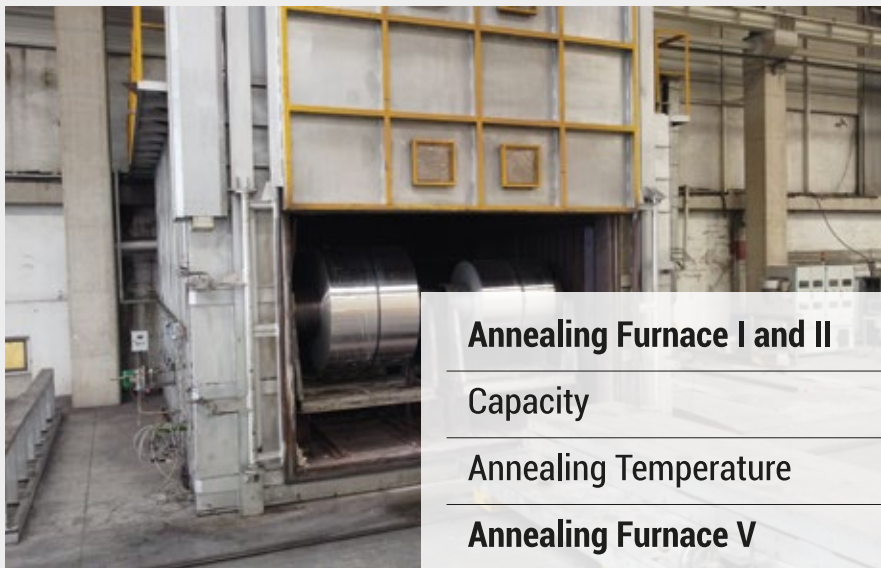
Compression Ratio	%45
Maximum Width	1600 mm
Thickness	0,30 - 10 mm



PRODUCTION PROCESSES



Annealing
Furnaces



Annealing Furnace I and II

Capacity	20 ton
----------	--------

Annealing Temperature	560 °C
-----------------------	--------

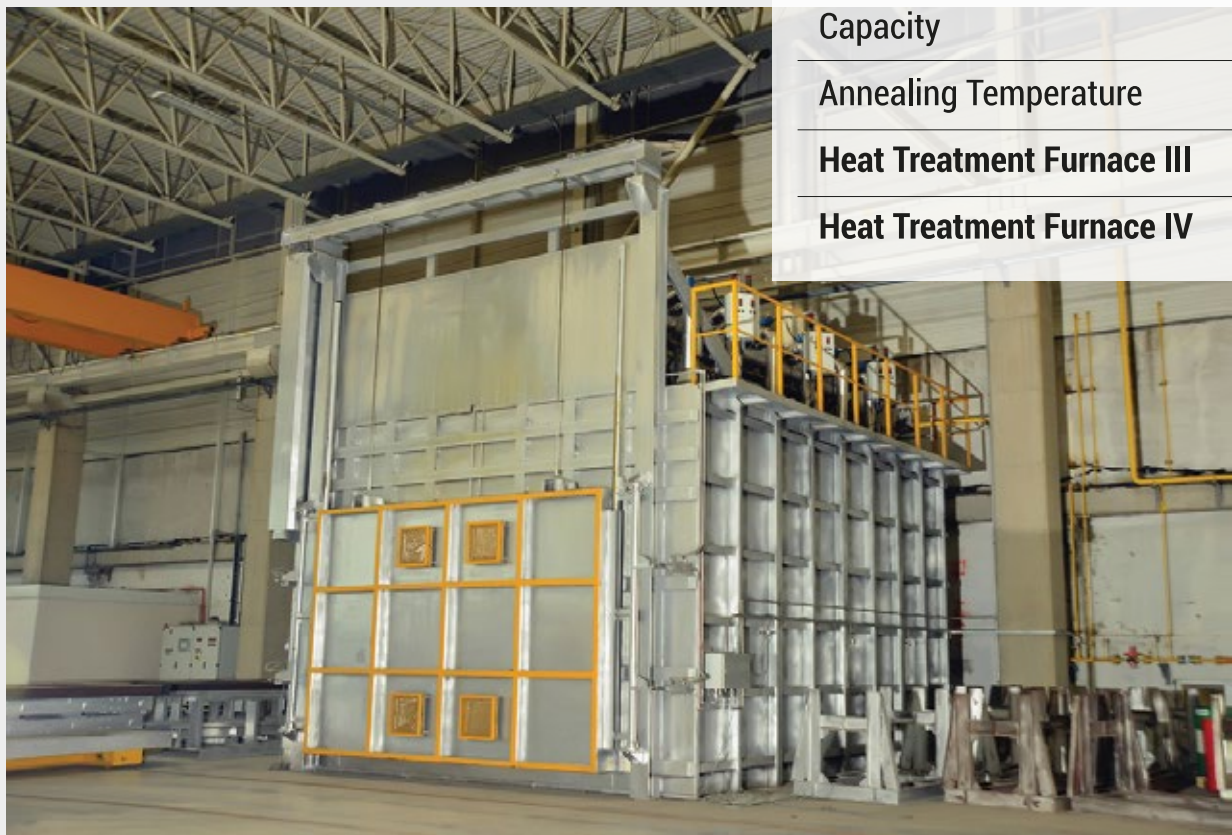
Annealing Furnace V

Capacity	60 ton
----------	--------

Annealing Temperature	560 °C
-----------------------	--------

Heat Treatment Furnace III	Aging
-----------------------------------	-------

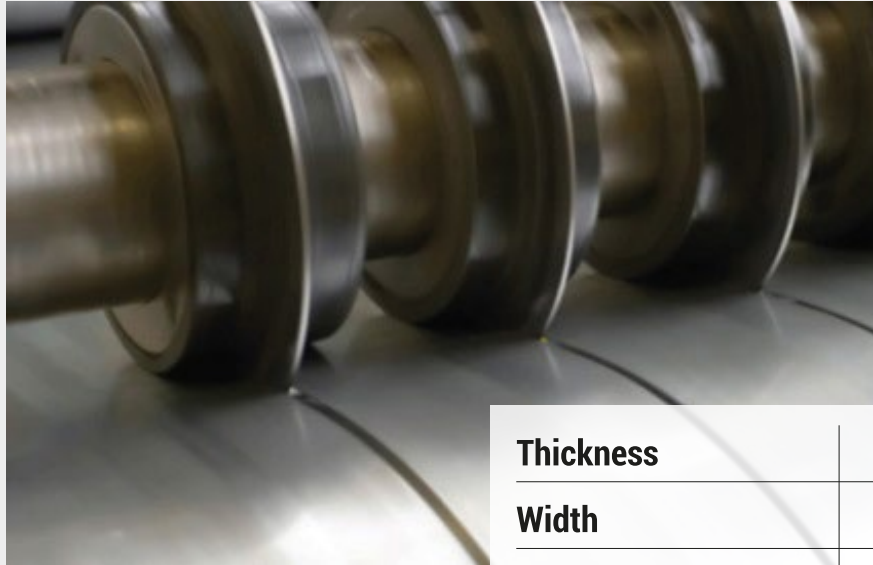
Heat Treatment Furnace IV	Quenching
----------------------------------	-----------



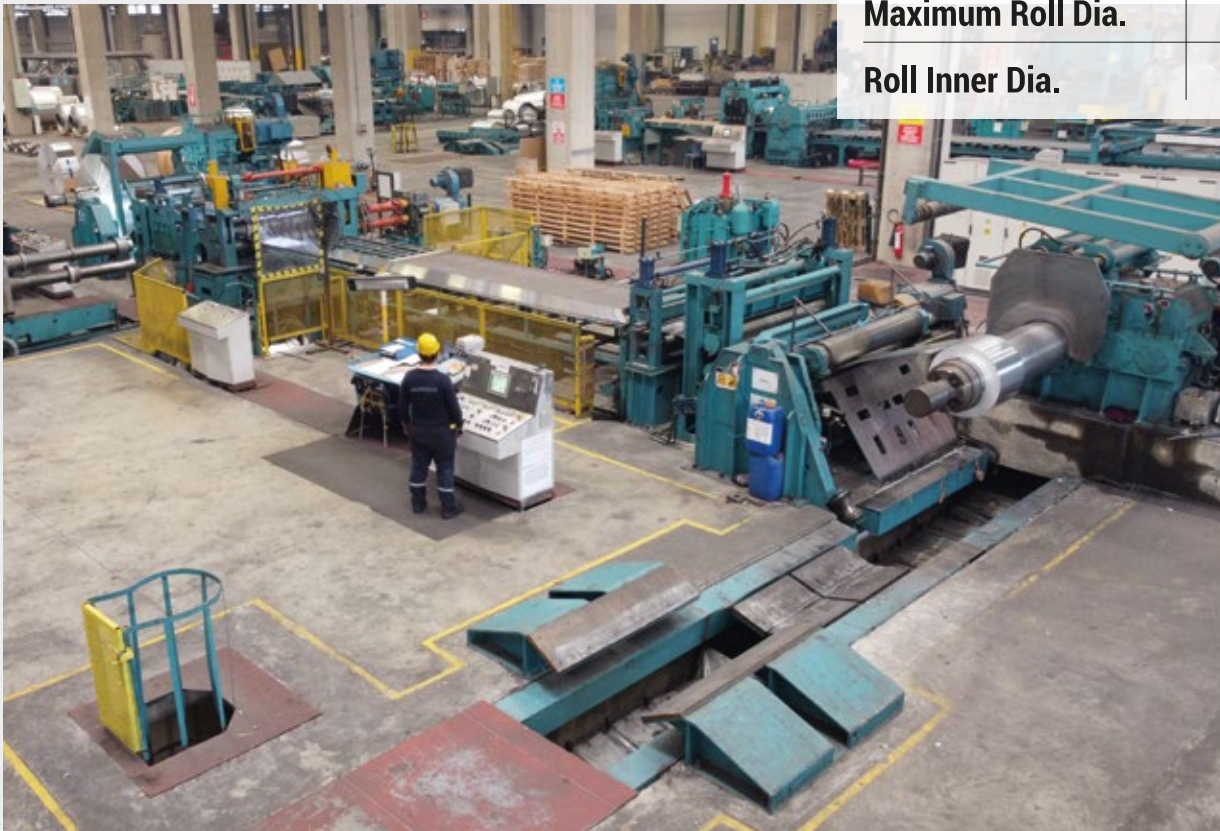
PRODUCTION PROCESSES



**Slicing
Lines**



Thickness	0,5 – 5 mm
Width	30 – 1524 mm
Maximum Roll Dia.	1800 mm
Roll Inner Dia.	400 and 508 mm



PRODUCTION PROCESSES



**Cut-to-Length
Lines**



Thickness	0,5 – 5,0 mm
Width	200 – 1524 mm
Length	200 – 6000 mm



PRODUCTION PROCESSES



**Washing -
Tensioning
Lines**



Thickness	0,2 - 5 mm
Width	300 - 1600 mm
Maximum Roll Dia.	1800 mm
Roll Inner Dia.	508 mm

PRODUCTION PROCESSES



**Disc
Press
Lines**



Dia.	80 - 750 mm
Thickness	0,30 - 10,00 mm



PRODUCTION PROCESSES



**Slug and
Forging
Press
Lines**



Hot- and Cold-Shaping Capability	3500 ton 5000 ton
Maximum Thickness	50 mm



Dia.	12,7 - 178,00 mm
Thickness	1,00 - 50,00 mm





www.almesan.com.tr

PRODUCTS



Technical Informations given is informing-aimed and Almesan Alüminyum keeps the right to change technical and design informations. Informations given include standard product groups. All your requests out of these product ranges can be contacted via **Contact Form** of our web site, **e-mail address** "info@almesan.com.tr" or **Our Phone Numbers**.

DISC

Aluminum discs are used in cookware manufacturing by coating with PTFE or enamel, furthermore, tabbed (toothed) discs are used to bring the heat transmission at the underlay perfection in cookware industry such as stainless steel pots and pans. The customers' demands are satisfied with broad range of mould inventory. By manufacturing our mould in our own moulding workshop, we uniquely provide distinction at price and quality.

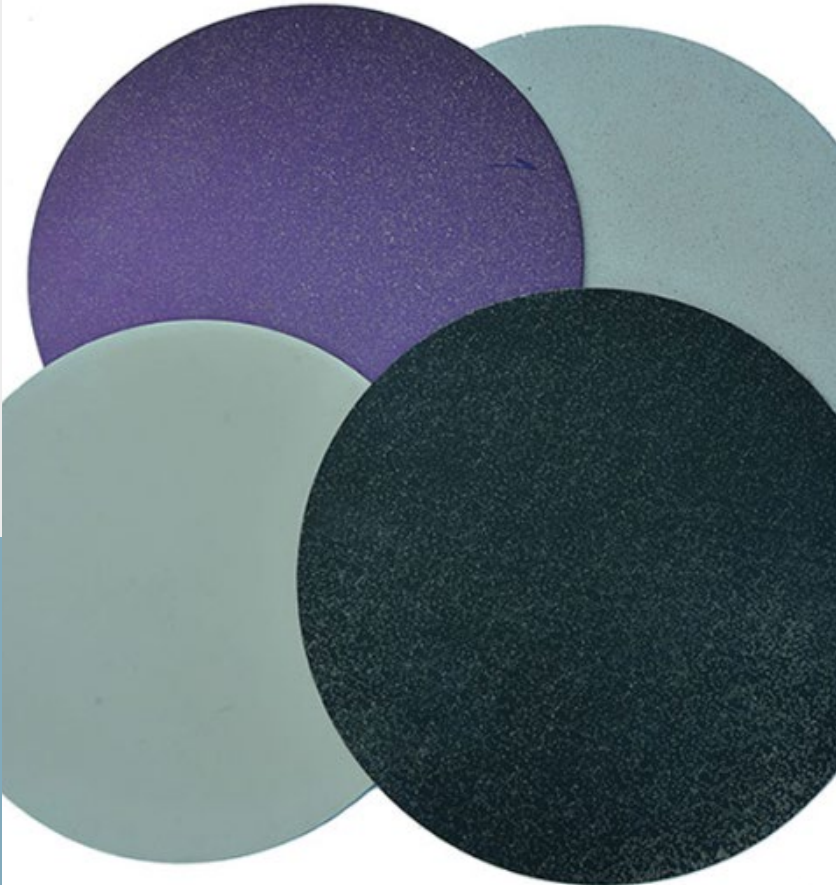


Thickness	0,40 - 10 mm
Dia.	100 - 750 mm
Alloy	1050, 1070, 1100, 3003, 4006, 8011, ECO2ALL
Temper	H0, H12, H14, H16, H18, H19, H22, H24, H26, H28

Utilisation Area:
Cookware, Traffic Signs, Decorative Goods

COATED DISC

Discs can be delivered to the customers as ready-to-shape with PTFE coating at Almesan Alüminyum. Based on specific customer requests, patterning with screen printing method and special colour options are also included of product range.



Thickness	0,40 - 10 mm
Dia.	100 - 750 mm
Alloy	1050, 1070, 1100, 3003, 4006, 8011, ECO2ALL

Utilisation Area :
Cookware

SLUG



Thickness	1 - 50 mm
Dia.	12,7 - 178 mm
Alloy	1050, 1070, 1100, 3003, 6060, 6061, 6063, 6082
Temper	H0 (Taleplere göre diğer kondisyonlarda da üretim yapılabilir.)

Utilisation Area:

Automotive, Cosmetics, Personal Care, Pharmacy, Aerosol, General Purposes Tubes

ROLL

HOT-ROLLED ROLLS

Thickness	5 - 12 mm
Width	300 - 550 mm
Inner Dia	508 mm
Outer Dia	1800 mm

COLD-ROLLED ROLLS

Thickness	0,15 - 10 mm
Width	300 - 1600 mm
Inner Dia	508 mm
Outer Dia	1800 mm



Alloy

1050, 1070, 1100, 3003,
3104, 3105, 4006, 4017,
8006, 8011

Temper

H0, H12, H14, H16, H18, H19,
H22, H24, H26, H28



Utilisation Area:

Automotive (Heat Shield, Heat Exchanger, Radiator), Construction – Architecture (Suspended Ceiling, Panel, Exteriors, Panel Radiator), Marine, Service Centers, Renewable Energy (Solar Panel), Cable, Household Appliances, Cans and Storage Containers, Usage for General Purposes

HOT-ROLLED PLATE

General Information

Aluminum used in machinery production and particularly in moulding production in the industry by importing it to our country is manufactured in thick sheet plates. Material manufacturing is made at conditions and technical specifications to cover the quality expectations of our customers. By the current sectoral developments, these products are in-use at automotive, defense and aviation industries.

Thickness	5 - 50 mm
Width	300 - 650 mm
Length	Maksimum 3000 mm
Alloy	1050, 1070, 1100, 3003, 6060, 6061, 6063, 6082
Temper	H0, T4, T6, T8

Utilisation Area :

Mould Manufacturing, Automotive, Defense and Aviation, Usage for Special Purposes



STRIP

Thickness	0,2 - 4 mm
Width	30 - 600 mm
Inner Dia.	400 - 508 mm
Outer Dia.	1200 - 1400 mm
Alloy	1050, 1070, 1100
Temper	H0, H12, H14, H16, H18, H19, H22, H24, H26, H28



Utilisation Area:

Transformer, Cable, Vehicle Plates, Car Radiator, Service Centers

SHEET

Thickness	0,2 - 2,5 mm * 0,5 - 5 mm **
Width	300 - 1524 mm
Length	* 200 - 700 mm ** 600 - 6000 mm
Alloy	1050, 1070, 1100, 3003, 3105, 4006, 4017, 8006, 8011
Temper	H0, H12, H14, H16, H18, H19, H22, H24, H26, H28



Utilisation Area

Automotive (Heat Shield), Marine, Construction - Architecture (Suspended Ceiling, Panel, Exteriors), Service Centers, Usage for General Purposes

SPECIFIC SHAPABLE PRODUCTS



Thickness	Maksimum 50 mm
Alloy	6060, 6061, 6063, 6082
Temper	H0, T4, T6, T8



Utilisation Area:
Automotive, Cosmetics, Personal Care



PRODUCT SAFETY AND MANAGEMENT SYSTEM

At Almesan Alüminyum, in order to make a sustainable system possible, development potential is revealed through different external and internal audits. Audits are seen as an opportunity to analyze nonconformities and risks, and the principle of transparency is not compromised in both external and internal audits.

Almesan Alüminyum use monitoring, measurement and evaluation methods for whole product safety works. Chemical composition is determined by the spectrometry device at laboratory. Determination of the mechanical properties is performed by multi-purpose tensile-compression test machine. Pre-sample Works are done at the prototype laboratory together with microscopic investigation to understand the effect to the final product by proper tempering as a result of material studies.

MANAGEMENT SYSTEMS CERTIFICATION AUDITS

ISO 9001 Quality MS

ISO 14001 Environmental MS

ISO 45001 OH&S MS

ISO 27001 Information Security MS

ISO 50001 Energy MS

IATF 16949 Automotive Quality MS

ECO2ALL Product MS

Pressure Equipment Directive (2014/68/EU) QMS
Conformity for Material Production

Compatibility Audits for AEO Regulations
Independent (Third Party) Financial Audits

Internal Audits

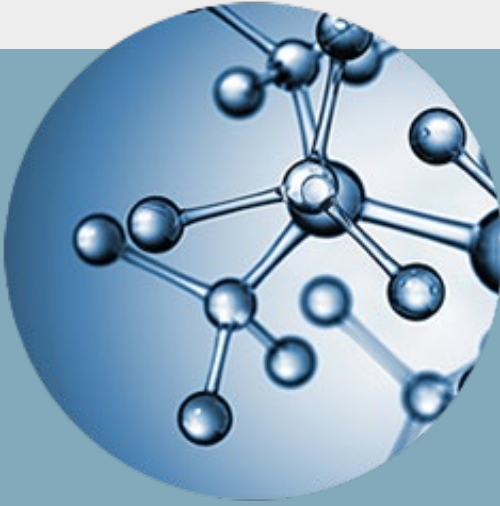
**Internal audits in the scope of management
systems**

Process internal audits

Product internal audits

**Supervisions and audits performed by
customers and/or by third party verifiers on
behalf of customers**





R&D AND INNOVATION

Almesan Alüminyum, since its establishment, it has focused to intensive works on the production of new products, their introduction to the market and the application of innovative production techniques that are alternative to existing production techniques.

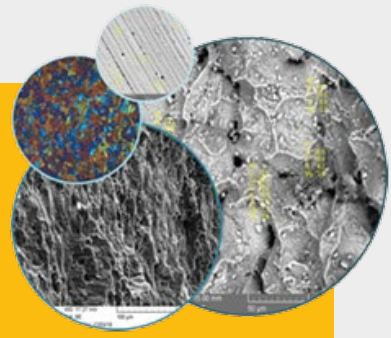
Almesan Alüminyum has made its research and development studies one of the main processes of the management system and has defined the concept of R&D together with the concepts of innovation and efficiency. Almesan Aluminum has set three strategic goals:

- Spreading the sustainable research and development culture throughout the company
- Promoting a training-based system that will increase the personal development and competence of employees
- Decision making mechanism based on measurable, accurate and reliable process data

Material R&D

Because of Almesan Alüminyum has two different continuous casting technologies, it has the advantage of responding to different demands of its customers by creating an alternative.

Customer-specific alloy design and design of mechanical properties are carried out. For the first time in Türkiye, the production of 6xxx series plates by continuous casting was carried out by Almesan Alüminyum.



Process R&D

R&D studies are carried out on the production techniques and processes of the Almesan Alüminyum product range, which convert into products reaching the end consumer at the customers' facilities. Processes that will produce more efficient, environmental-friendly and low carbon footprints are among the priorities of Almesan Alüminyum.

Joint studies are also carried out on alternative production techniques with customers. Alternative production and reuse of specific consumables used in production processes are other important process R&D studies.



Product R&D

Special alloys take priority in terms of mechanical strength in the use of aluminum in the automotive, defense and aerospace sectors, which are gaining more importance today. R&D studies are carried out to design these alloys, to create production processes and to convert them into products requested by customers.

By bracket parts and technical slugs made of 6xxx series alloys for the automotive industry, more than 50% operational advantage has been achieved in the process stages of customers' businesses.



Sustainability and ECO2ALL



The UN Global Compact fully coincide with the corporate values of Almesan Alüminyum, and the global compact gathered under the main headings of human rights labor standards, environment and anti-corruption are supported by Almesan Alüminyum.



ECO2ALL ECOLOGIC AND ECONOMIC ALLOYS



Academic Collaboration

We collaborate Material Science Engineering Departments of Leading Universities of Türkiye to develop the alloy series targeted.

Supplier and Supply Chain Development Program

For a continual product quality and a continual supply chain together with effective energy consumption and lower carbon footprint; we work for a sustainable supply chain by raising awareness of appropriate suppliers who are able to produce targeted quality recycled ingots in Türkiye.



100 % Recyclable Upto 95% Lower Carbon Footprint Green Alloys

R&D

Design of material and alloy, design of proper production process to achieve the suitable technical properties, determination of product ranges and capabilities, testing and verification are performed at Almesan İVME.



Product Declaration of Conformity

Declaration of conformity of ECO2ALL products have been prepared by Almesan Alüminyum accordance with ISO 14021:2016 Environmental labels and declarations.



Compatibility with End Product

We test and evaluate short- and long-term performances of end-products in the form of kitchenware goods, produced from ECO2ALL discs with 100% recycled and lower carbon footprint.

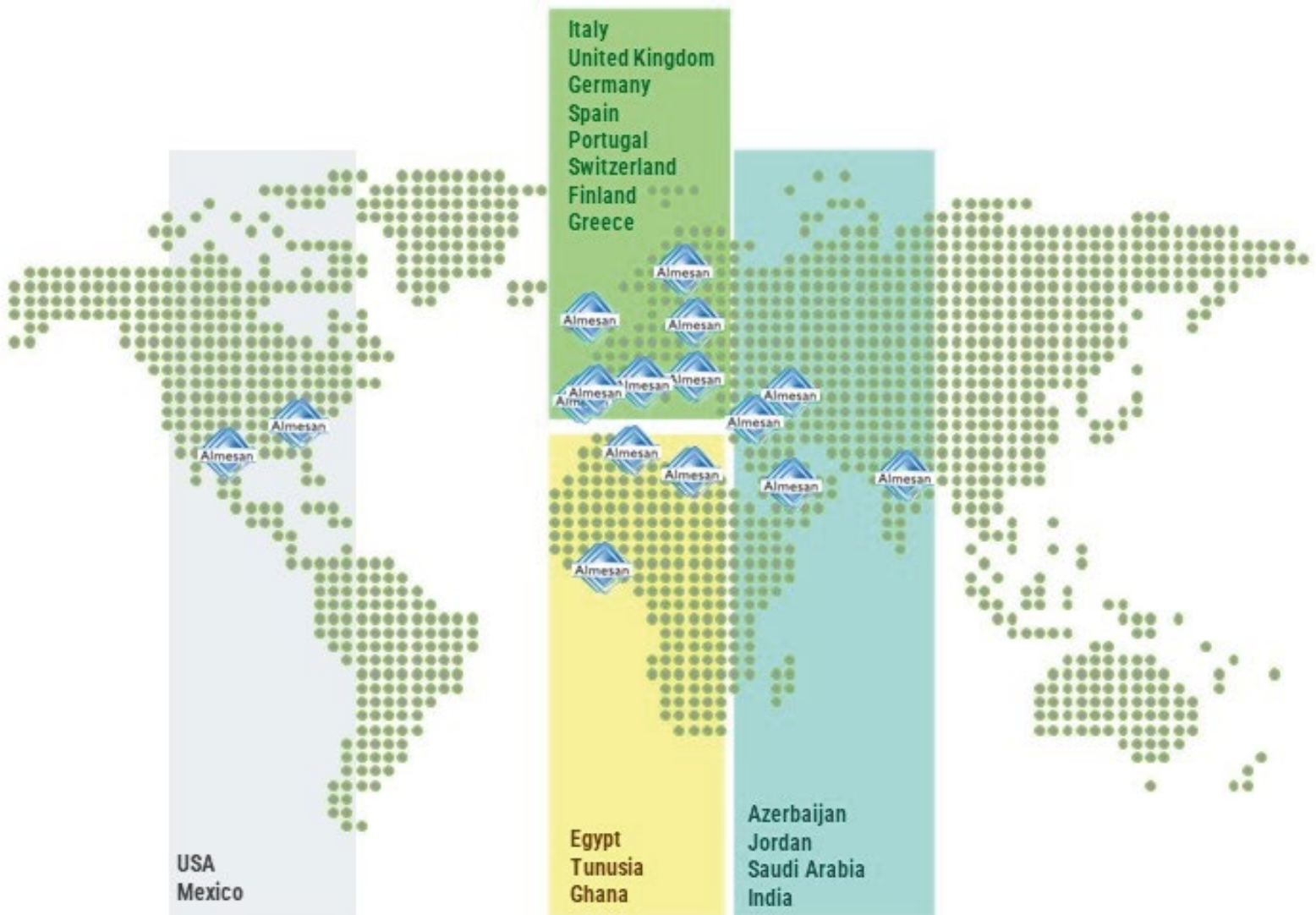


Independent Audit

ECO2ALL Product Management System of Almesan Alüminyum has been audited and approved based on compatibility between documentation and recording system and applications on factory site, together with procurement management, planning, production, sales, test and evaluation processes also including the calculations of recycling ratio and greenhouse emission.



Almesan Alüminyum Worldwide



***...Let's Start Today
For Future Generations...***



Almesan Alüminyum is a Selçuklu Holding company.



PLEASE SCAN QR FOR
OUR ONLINE CATALOGUE

Almesan Alüminyum Sanayi ve Ticaret A.Ş.
Arslanbey Organize Sanayi Bölgesi, 1. Cadde
No:10, 41285 Kartepe – Kocaeli / Türkiye
T: +90 (262) 351 39 43 | F: +90 (262) 351 39 46

info@almesan.com.tr
www.almesan.com.tr